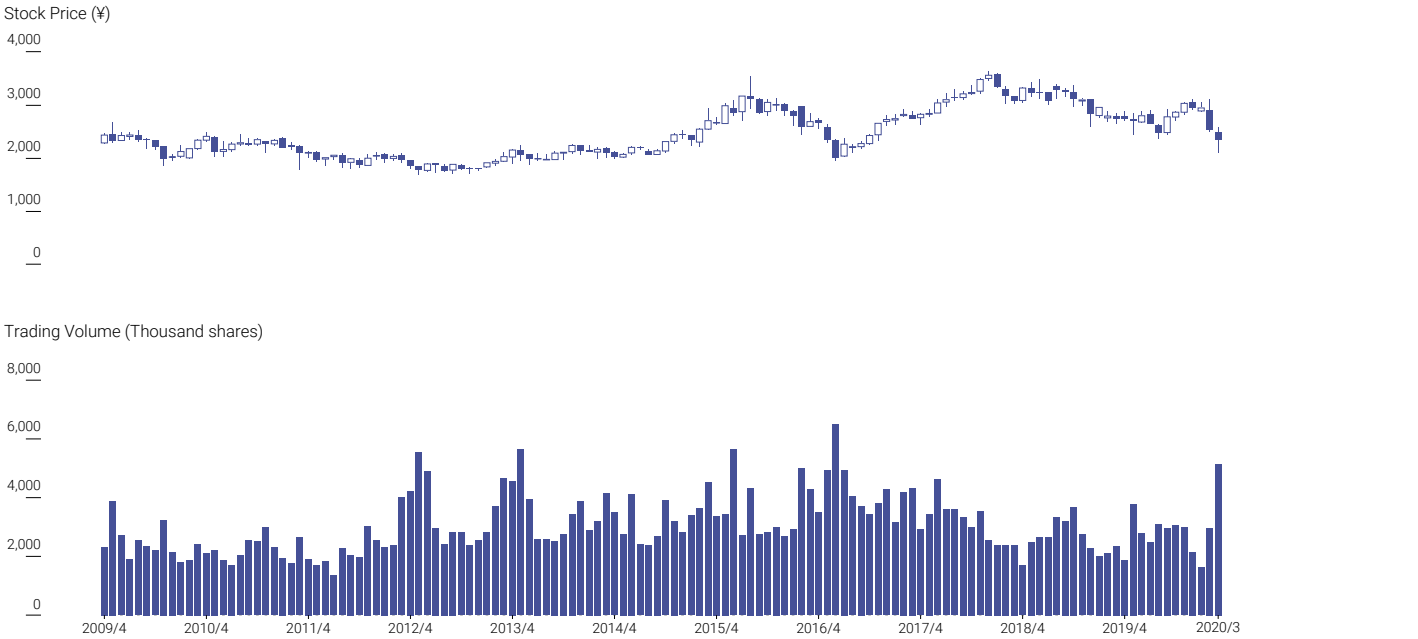


Corporate Information

As of March 31, 2020

Company Name	Wacoal Holdings Corp.
Head Office	29 Nakajima-cho, Kisshoin, Minami-ku, Kyoto 601-8530, Japan
Founding	June 15, 1946
Establishment	November 1, 1949
Capital	¥13,260 million
Representative Director and Chairman	Yoshikata Tsukamoto
Representative Director and President	Hironobu Yasuhara
Line of Business	Wacoal's mainstay business is the manufacture, wholesale, and direct sales to consumers (for some products) of intimate apparel (mainly women's foundation garments, lingerie, nightwear, and children's underwear), outerwear, sportswear, and other textile products and accessories. In addition, Wacoal operates other business related to food, culture, services, and interior furnishing of shops.
Number of Employees	20,984 (Consolidated)

Stock Price / Trading Volume

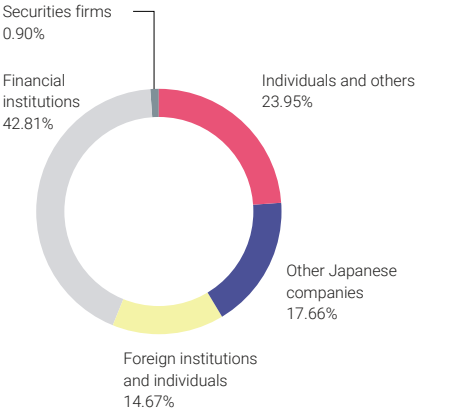


Investor Information

As of March 31, 2020

Stock Listing	Tokyo Stock Exchange
Fiscal Year-end	March 31
Securities Code	3591
Fiscal Year	From April 1 to March 31
Number of Shares Issued	68,589,042 (Treasury Stock: 6,186,410)
Trading Unit	100 shares
Shareholder Register Agent for Common Stock	Mitsubishi UFJ Trust and Banking Corporation, 1-4-5, Marunouchi, Chiyoda-ku, Tokyo 100-8212, Japan
American Depositary Receipts	Cusip No.: 930004205 Ratio (ADR:ORD): 1:5 Market: OTCQX Symbol: WACLX
Depository	The Bank of New York Mellon, 101 Barclay Street, New York, NY 10286, U.S.A. Tel: 1-212-815-8161 U.S. toll free: 888-269-2377 (888-BNY-ADRS) <a href="https://www.adrbnymellon.com/">https://www.adrbnymellon.com/</a>
Number of Shareholders	15,121

Ownership and Distribution of Shares



Major Shareholders

	Number of shares held (Thousand shares)	Percentage of shares out-standing (%)
The Master Trust Bank of Japan, Ltd. (Trust Account)	3,447	5.52
The Bank of Mitsubishi UFJ, Ltd.	3,195	5.12
Japan Trustee Services Bank, Ltd. (Trust Account)	3,081	4.94
Meiji Yasuda Life Insurance Company	3,050	4.89
The Bank of Kyoto, Ltd.	2,352	3.77
Nippon Life Insurance Company	1,836	2.94
The Shiga Bank, Ltd.	1,775	2.84
Mitsubishi UFJ Trust and Banking Corporation	1,525	2.44
The Dai-ichi Life Insurance Company, Ltd.	1,366	2.19
Asahi Kasei Corp.	1,241	1.99

Note: The percentages exclude treasury stock.