

## CORPORATE DATA

As of March 31, 2010

**Head Office**

29, Nakajima-cho, Kisshoin,  
Minami-ku, Kyoto 601-8530, Japan  
Tel: (075) 682-5111 Fax: (075) 661-5603

**Website**

www.wacoalholdings.jp/index\_e.html

**Date of Foundation**

June 15, 1946

**Date of Establishment**

November 1, 1949

**Shareholders' Equity**

¥171,630 million

**Number of Employees (Consolidated)**

15,614

**Domestic Principal Subsidiaries**

<b>Wacoal Holdings Equity Owned</b>	%
Wacoal Corp.	100
Peach John Co., Ltd.	100
LECIEN Corporation	100
Une nana cool Corp.	100
Kyushu Wacoal Manufacturing Corp.	100
Niigata Wacoal Sewing Corp.	100
Fukuoka Wacoal Sewing Corp.	100
Miyazaki Wacoal Sewing Corp.	100
Hokuriku Wacoal Sewing Corp.	90
Torica Inc.	57
Nanasai Co., Ltd.	82
Wacoal Distribution Corp.	100

**Domestic Principal Joint Ventures**

<b>Wacoal Holdings Equity Owned</b>	%
House of Rose Co., Ltd.	20

**Overseas Principal Subsidiaries**

<b>Wacoal Holdings Equity Owned</b>	(%)
Wacoal International Corp. (U.S.A.)	100
Wacoal America, Inc.	100
Wacoal France S.A.	100
Wacoal (UK) Limited	100
Wacoal Singapore Pte. Ltd.	100
Wacoal Hong Kong Co., Ltd.	80
Wacoal International Hong Kong Co., Ltd.	100
Wacoal China Co., Ltd.	100
Guangdong Wacoal Inc.	100
Dalian Wacoal Co., Ltd.	100
Vietnam Wacoal Corp.	100
Wacoal Dominicana Corp.	100
Philippine Wacoal Corp.	67
Wacoal Sports Science Corp.	100
Wacoal (Shanghai) Human Science R&D Co., Ltd.	100

**Overseas Joint Ventures**

<b>Wacoal Holdings Equity Owned</b>	%
Shinyoung Wacoal Inc. (South Korea)	25
Thai Wacoal Public Co., Ltd.	34
Taiwan Wacoal Co., Ltd.	50
Indonesia Wacoal Co., Ltd.	42
Wacoal Malaysia Sdn. Bhd.	50
Shanghai Yadie Fashion Co., Ltd.	20

**International Network****Wacoal America, Inc.**

136 Madison Avenue,  
New York, NY 10016, U.S.A.  
Tel: 1-212-532-6100

**Wacoal France S.A.**

7/11 Rue des Gazometres,  
93218 Saint-Denis La Plaine Cedex, France  
Tel: 33-1-5593-0310

**Wacoal (UK) Limited**

4th Floor, Hardy House,  
16-18 Beak Street,  
London W1R 3HA,  
United Kingdom  
Tel: 44-207-439-6190

**Wacoal Singapore Pte. Ltd.**

215 Henderson Road,  
#01-08 Henderson Industrial Park,  
Singapore 159554  
Tel: 65-6270-2887

**Wacoal Hong Kong Co., Ltd.**

8th Floor, EGL Tower,  
No. 83 Hung To Road, Kwun Tong, Kowloon,  
Hong Kong  
Tel: 852-2811-3202

**Wacoal International Hong Kong Co., Ltd.**

8th Floor, EGL Tower,  
No. 83 Hung To Road, Kwun Tong, Kowloon,  
Hong Kong  
Tel: 852-2561-9191

**Wacoal China Co., Ltd.**

Jia 16 Tongji North Road,  
Beijing Economic & Technological  
Development Area,  
Beijing 100176, P. R. C.  
Tel: 86-10-6787-2185

**Guangdong Wacoal Inc.**

Huahai Industrial District,  
Xinhua Town, Huadu Qu,  
Guangzhou City,  
Guangdong, P. R. C.  
Tel: 86-20-8686-1170\*3

**Dalian Wacoal Co., Ltd.**

#42 Economic & Technical  
Development Zone, Dalian,  
Liaoning, P. R. C.  
Tel: 86-411-8733-7722

**Vietnam Wacoal Corp.**

110 Amata Road,  
Amata Mordern Industrial Park,  
Long Binh Ward, Bien Hoa City,  
Dong Nai Province,  
Socialist Republic of Vietnam  
Tel: 84-61-892060\*2

**Wacoal Dominicana Corp.**

Zona Franca Industrial,  
Las Americas KM22,  
Autopista Las Americas,  
Santo Domingo, Dominican Republic  
Tel: 1-809-549-1090

**Philippine Wacoal Corp.**

3rd Floor, 6788 Ayala Avenue,  
Makati Metro Manila, Philippines  
Tel: 63-2-893-7432

**Shinyoung Wacoal Inc.**

345-54, Ka San Dong, Cum Chone Gu, Seoul,  
Republic of Korea  
Tel: 82-2-818-5120

**Thai Wacoal Public Co., Ltd.**

930/1 Soi Pradoo 1,  
Sathupradith Bangkholaem,  
Bangkok, Thailand  
Tel: 66-2-289-3100\*9

**Taiwan Wacoal Co., Ltd.**

15, Jingkwo Road, Taoyuan,  
Taiwan, R.O.C.  
Tel: 886-3-326-9369\*80

**Indonesia Wacoal Co., Ltd.**

Jl. Tarikolot No. 59,  
Citeureup-Bogor, Indonesia  
Tel: 62-21-875-3611

**Wacoal Malaysia Sdn. Bhd.**

5th Floor, Plaza Hamodal,  
Lot 15, Jalan 13/2 (Section 13),  
46200 Petaling Jaya, Selangor, Malaysia  
Tel: 60-3-7960-8308

**Wacoal Sports Science Corp.**

136 Madison Avenue,  
New York, NY 10016, U.S.A.  
Tel: 1-212-743-9849

**Wacoal (Shanghai) Human Science**

R&D Co., Ltd.  
7th Floor, Jiangnan Zaochuan Bldg.,  
600 Luban Road, Luwan District,  
Shanghai, P. R. C.  
Tel: 86-21-6390-7448

## INVESTOR INFORMATION

As of March 31, 2010

### Stock Listings

Tokyo, Osaka, NASDAQ

### Fiscal Year-End

March 31

### Securities Code

3591

### Common Stock

Issued: 143,378,085 shares

Outstanding: 141,198,346 shares

### Trading Unit

1,000 shares

### Shareholder Register Agent for Common Stock

Mitsubishi UFJ Trust and  
Banking Corporation  
1-4-5, Marunouchi, Chiyoda-ku,  
Tokyo 100-8212, Japan

### American Depositary Receipts

Cusip No.: 930004205

Ratio (ADR:ORD): 1:5

Exchange: NASDAQ

Symbol: WACLY

### Depository

The Bank of New York Mellon  
101 Barclay Street,  
New York, NY 10286, U.S.A.  
Tel: 1-212-815-8161

U.S. toll free: 888-269-2377

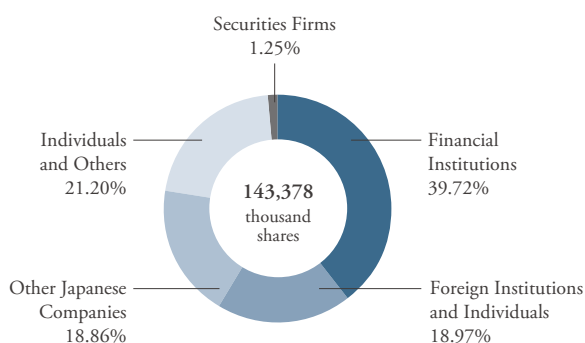
(888-BNY-ADRS)

URL: <http://www.adrbny.com>

### Number of Shareholders

10,350

### Ownership and Distribution of Shares

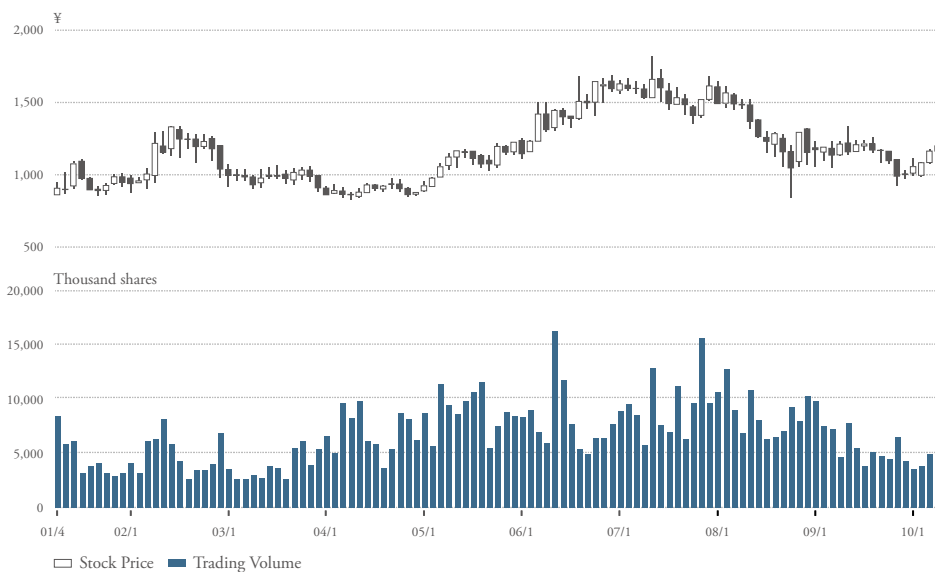


### Major Shareholders

Shareholder	%
The Bank of New York Mellon as depository bank for depository receipt holders*	11.65
The Bank of Tokyo-Mitsubishi UFJ, Ltd.	4.88
Meiji Yasuda Life Insurance Company	4.88
Mika Noguchi	4.67
Nippon Life Insurance Company	3.84
The Bank of Kyoto, Ltd.	3.28
The Dai-ichi Mutual Life Insurance Company	2.72
The Shiga Bank, Ltd.	2.54
Japan Trustee Services Bank, Ltd. (Trust Account)	2.31
Mitsubishi UFJ Trust and Banking Corporation	2.12

\* Shares deposited to issue American Depositary Shares traded on the NASDAQ stock market.

### Stock Price/Trading Volume



### Forward-Looking Statements

Statements contained in this annual report that are not historical facts are forward-looking statements which reflect the Company's plans and expectations. These forward-looking statements involve known and unknown risks, uncertainties, and other factors that may cause the Company's actual results, performance, or achievements to differ materially from those anticipated in these statements.